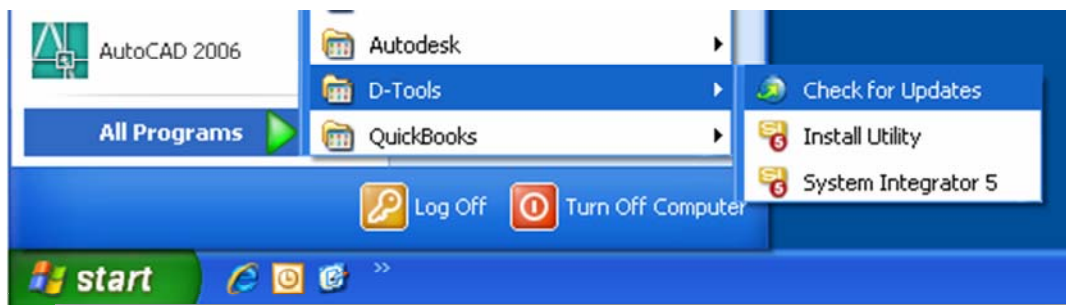


System Integrator 5 – Installing Updates and Configuring Automatic Updates

Step 1: Check For Updates

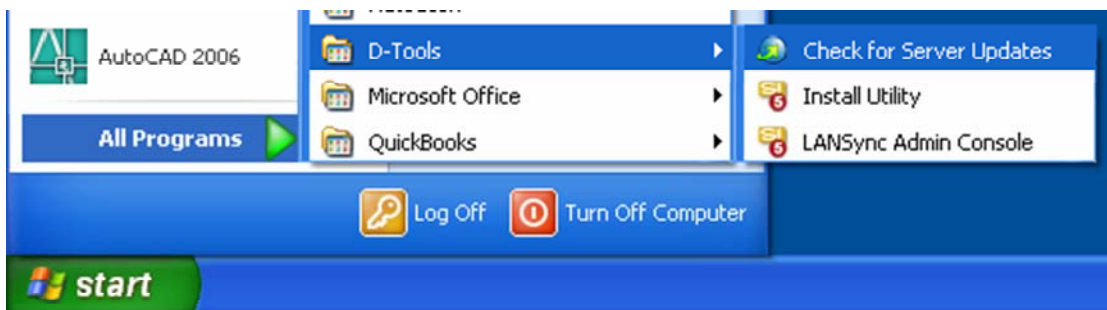
Desktop (all users)

If you have automatic updates activated (see below), your desktop software will check for updates when you open SI5. This will happen once every two days by default. If you wish to manually check for updates, go to **Start > All Programs > D-Tools > Check For Updates**. This is performed on all machines running the SI5 desktop application.



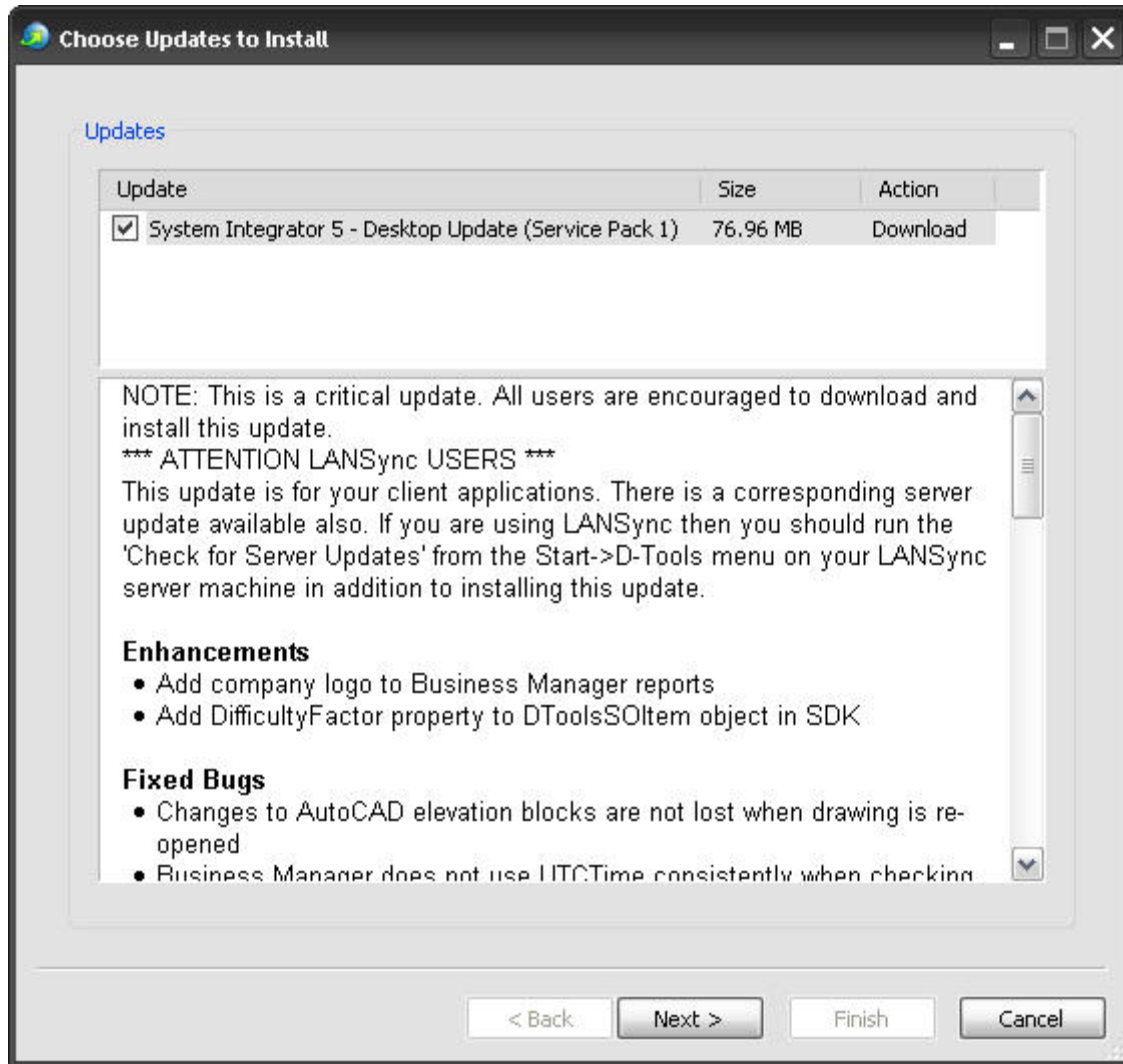
Server (LANSync users only)

Checking for server updates must be performed manually on your server. Go to **Start > All Programs > D-Tools > Check For Server Updates**. Note that this must be done on the server machine.

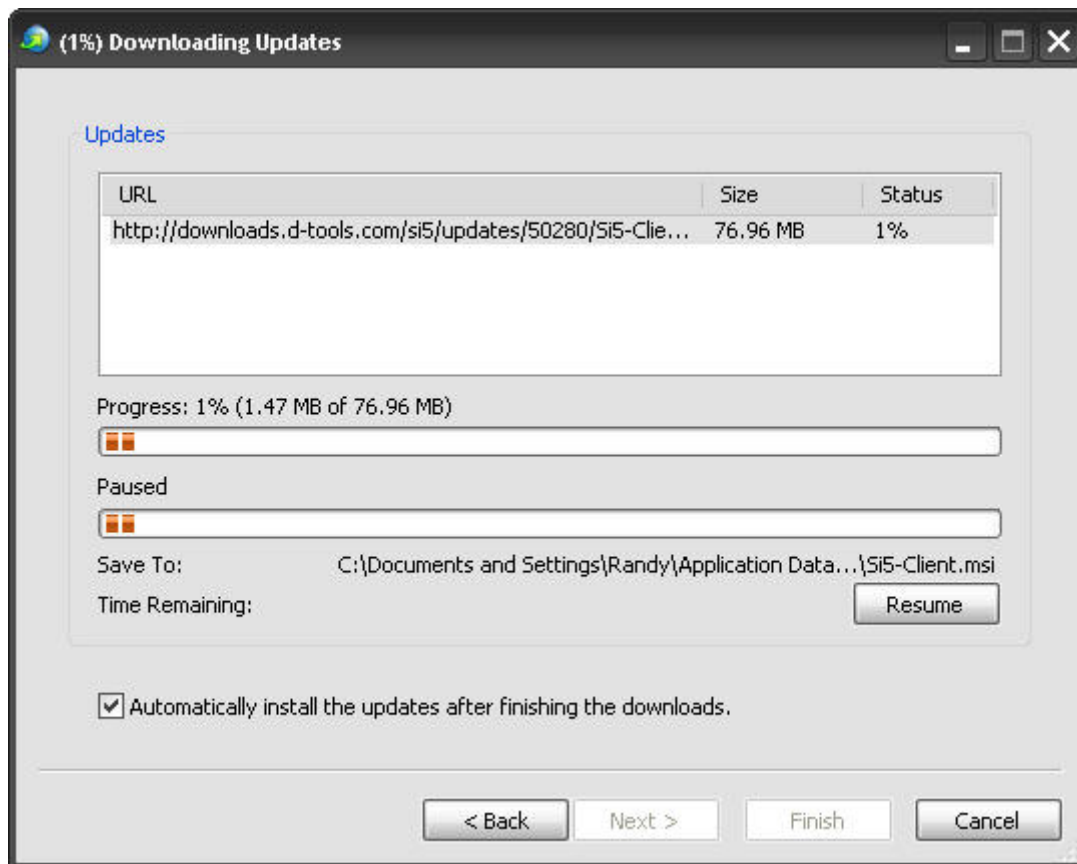


Step 2: Download Updates

If an update is available, you will see a screen which describes the available updates and asks you to select which one(s) you wish to download. Click **Next** to download the update(s).



The download will start immediately. If you leave the “Automatically install the updates after finishing the downloads” checkbox checked, installation will commence immediately once the update is downloaded.

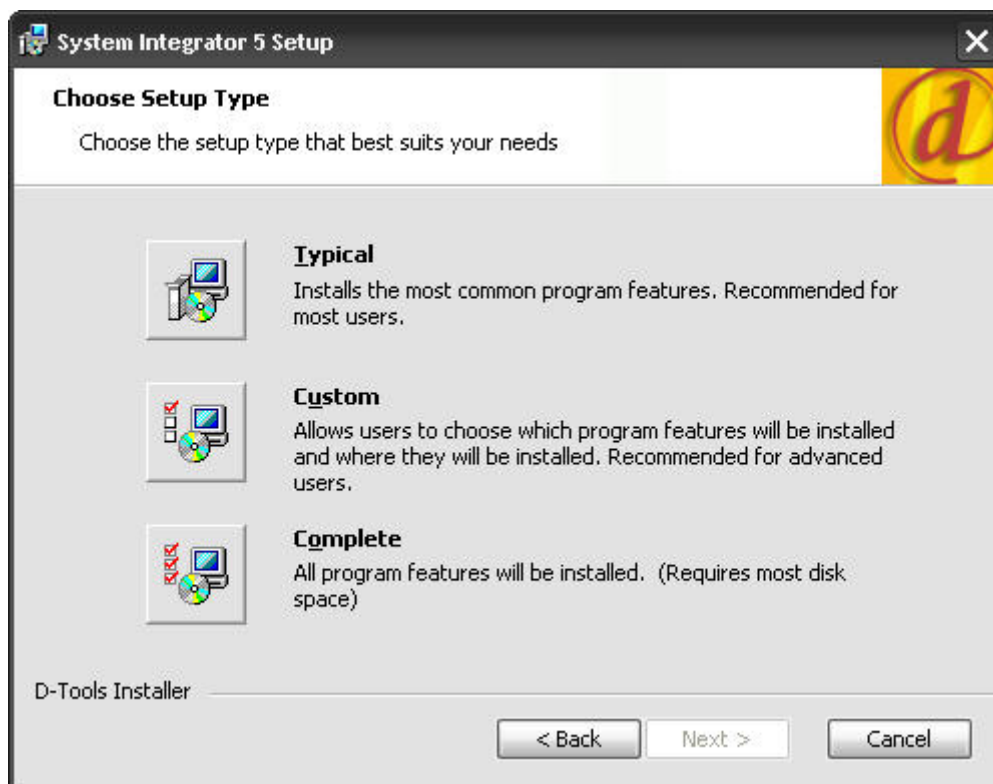


Step 3: Install Updates

If you leave the “Automatically install the updates after finishing the downloads” checkbox checked, the SI5 Installer will open immediately upon downloading the update. If you uncheck this checkbox, you can run the downloaded updates later by going to **Check for Updates/Check for Server Updates** per the instructions above. Follow the onscreen instructions to continue with the installation.



It is generally safest to select "Complete" when you get to the screen below. This will download all components.



Appendix: Configuring Automatic Updates

To change the frequency of checking or to disable automatic updates you can run the update utility from the command line to display the options dialog.

From a command line or from the Run menu, type:

"C:\Program Files\D-Tools\SI 5\Si5Updates.exe" /configure

